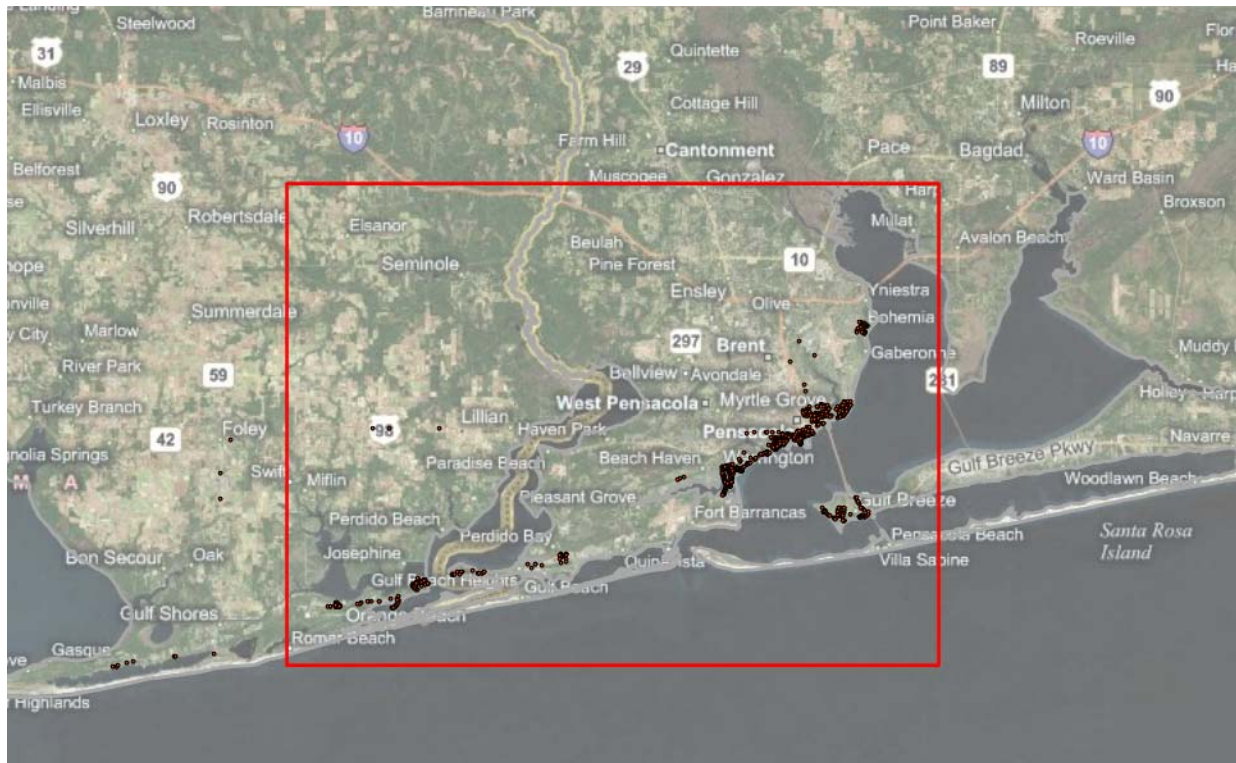


HURRICANE IVAN DATA COVERAGE



Overview of coverage extent



GPS trail of data acquisition path

Communities covered: Pensacola, Orange Beach, Gulf Breeze, Warrington

Approximately 600 buildings covered in the various communities. Residential, commercial and industrial structures.

10+ hrs of Digital Video GPS-photo trail -ground