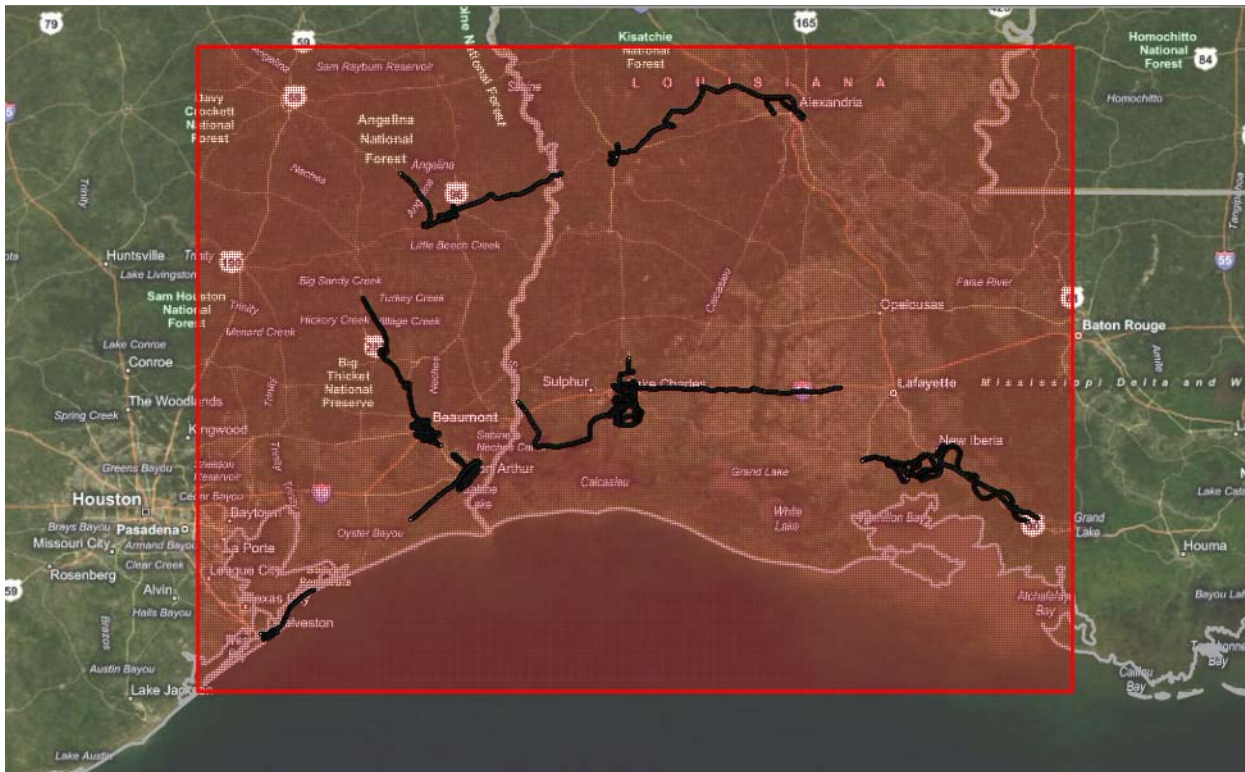


## HURRICANE RITA DATA COVERAGE



Overview of coverage extent



GPS trail of data acquisition path

Communities covered St. Charles, St Mary, New Iberia, Galveston, Port Arthur, Groves, Beaumont

Approximately 5000+ buildings in various communities. Several (approximately 5) oil refineries around Beaumont and Port Arthur. Coverage includes residential, industrial and commercial structures, hotels and highways.

6,000 + Hi Def images and GPS-photo trail of aerial wind and flood damage

Images are for GPS trail only